

DOUGLAS COUNTY, OREGON

2014-15 BUDGET

1036 S.E. Douglas Ave., Roseburg, Oregon 97470

Telephone: (541) 672-3311

www.co.douglas.or.us

DOUGLAS COUNTY BUDGET COMMITTEE

CITIZEN MEMBERS

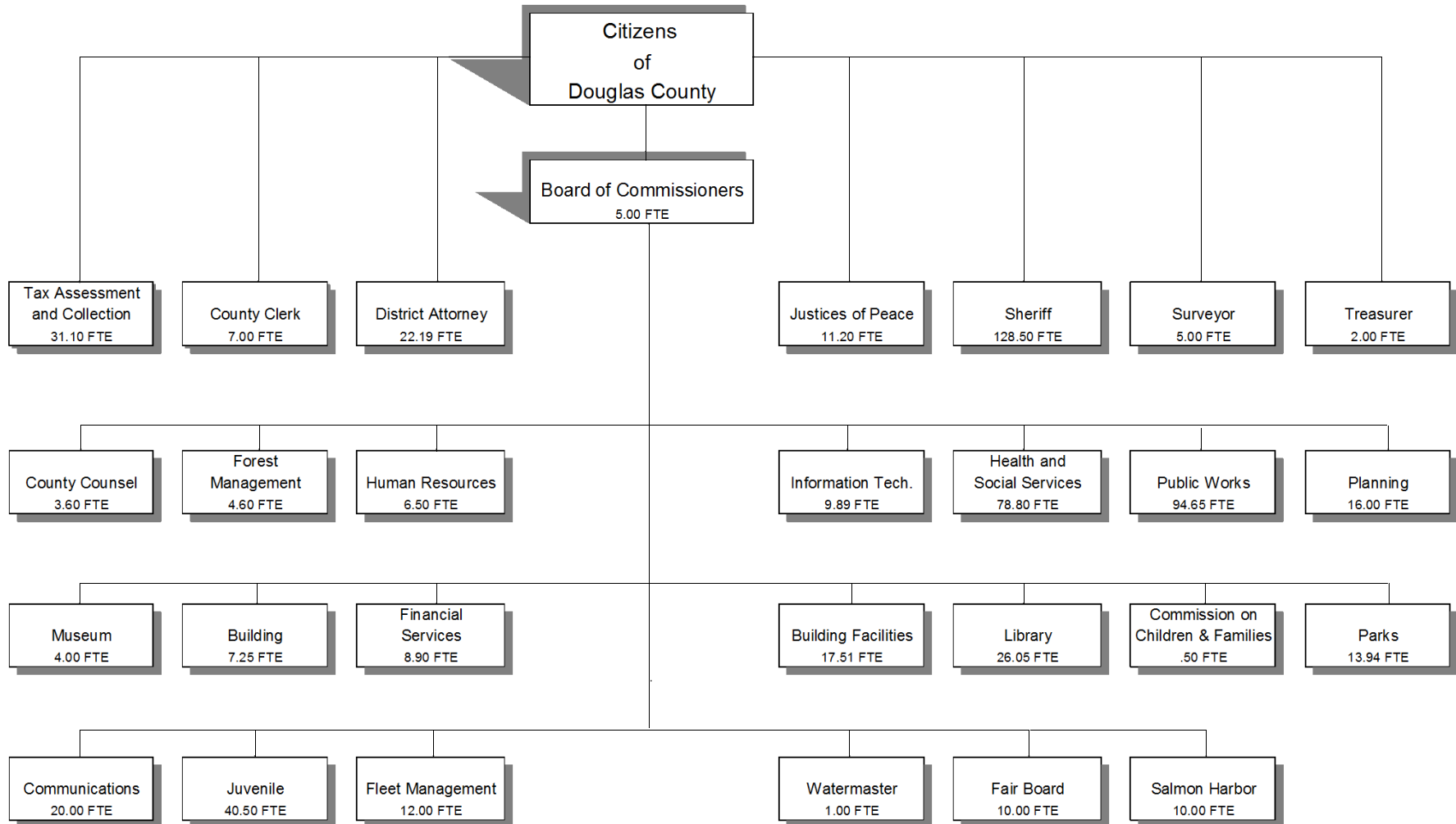
Mike Winters	June 30, 2016
Bill Leming	June 30, 2015
Sandra Jackson	June 30, 2014

BOARD OF COMMISSIONERS

Telephone: (541) 440-4201

Susan Morgan	December 31, 2016
Doug Robertson	December 31, 2016
Joe Laurance	December 31, 2014

**DOUGLAS COUNTY, OREGON
ORGANIZATION CHART**



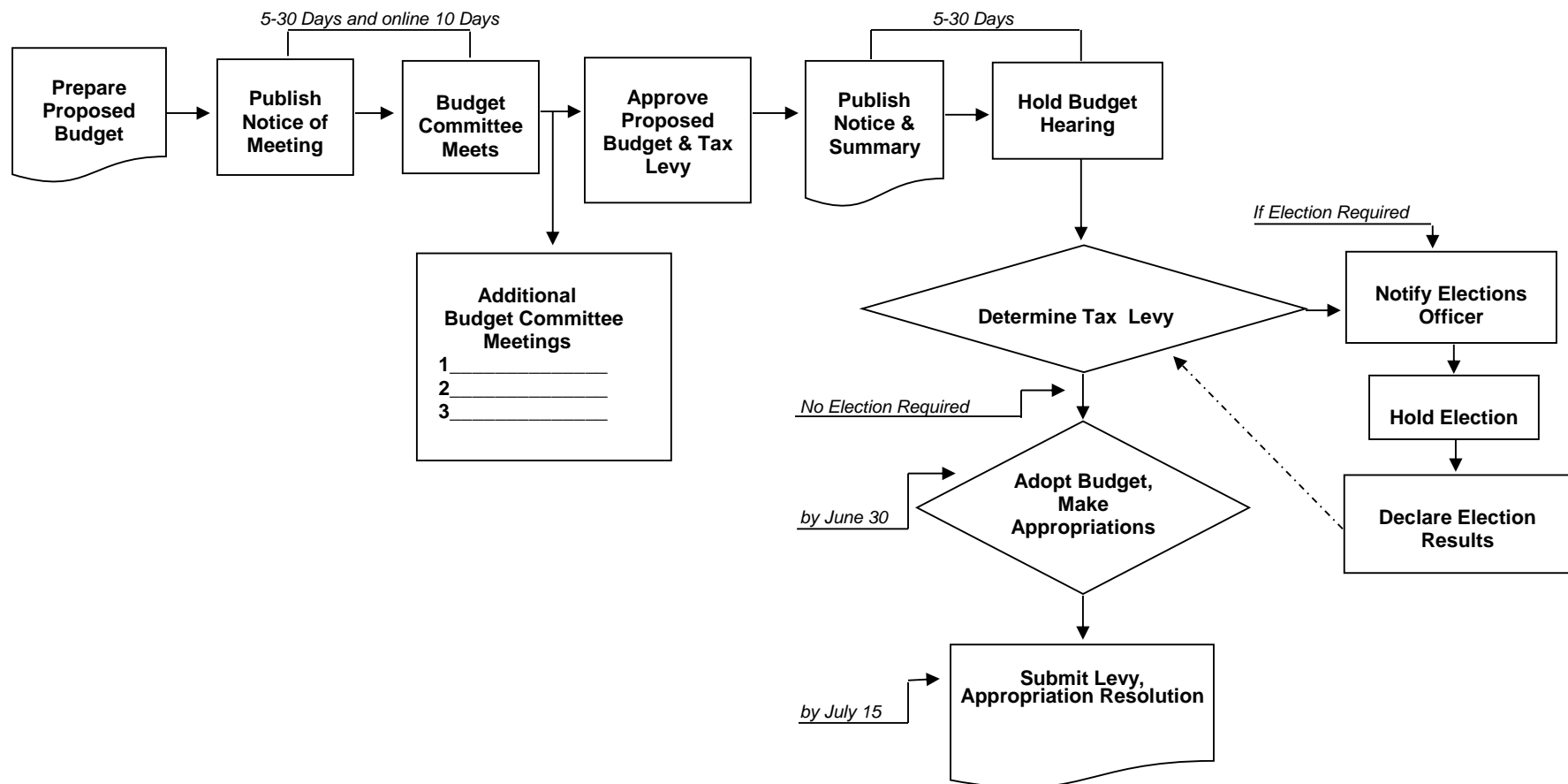
Total 2014-15 FTE 597.68

Douglas County, Oregon
FY 2014-15 Budget

BUDGET CALENDAR

<u>Event</u>	<u>Date</u>
Board of Commissioners meet with Department Heads	<i>March 6 & 7, 2014</i>
Departments' proposed budget worksheets back to Management & Finance	<i>March 21, 2014</i>
Proposed budget to Budget Committee	<i>May 5, 2014</i>
Publish 1st notice of Budget Committee meetings	<i>May 5, 2014</i>
Budget Committee meetings	<i>May 12 & 13, 2014</i>
Publish notice of budget hearing and budget summary	<i>June 11, 2014</i>
Board of Commissioners holds public hearing	<i>June 18, 2014</i>
Board of Commissioners adopts budget, makes appropriations and levies taxes	<i>June 25, 2014</i>
Budget document to Assessor's Office	<i>July 15, 2014</i>

THE ANNUAL BUDGET PROCESS



**DOUGLAS COUNTY
PROPERTY TAX INFORMATION
FY 2014-15 BUDGET**

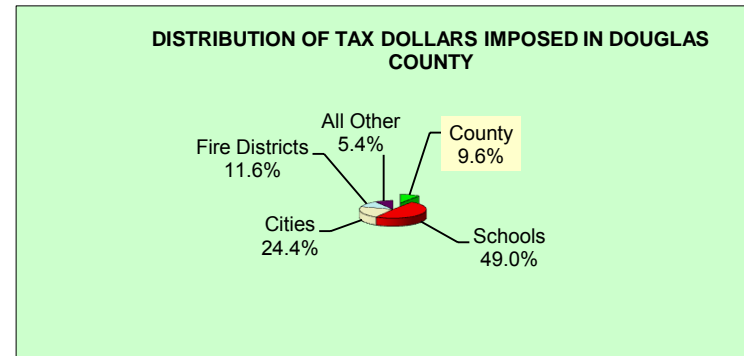
Douglas County was established on January 7, 1852. It encompasses 5,071 square miles and extends from the Pacific Ocean to the Cascade Range. The entire watershed of the Umpqua River lies within the County's boundaries.

ZONING/LAND OWNERSHIP		
	% of Total	Total Acres
Rural Residential	3.22%	103,808
Residential	1.62%	52,136
Commercial	0.20%	6,345
Industrial	0.20%	6,527
Farm Use - Exclusive	5.74%	185,253
Farm Use - Not Zoned Exclusive	6.18%	199,535
Special Resource Id	0.10%	3,193
Private Recreation Land	0.02%	787
American Indian	0.14%	4,429
Private Forest Lands	28.56%	921,811
Federally Owned Lands	51.83%	1,672,567
State Owned Lands	1.46%	46,976
County Owned	0.32%	10,451
City Owned	0.13%	4,057
Exempt Lands	0.29%	9,287
	100.00%	3,227,162

Assessed Property Values and Property Tax Levies			
Fiscal Year	Assessed Value	Rate Per \$1,000	Net Levy
2013-14	\$7,917,224,641	1.11	\$9,102,004
2012-13	7,715,156,674	1.11	8,871,490
2011-12	7,514,159,463	1.11	8,541,149
2010-11	7,322,895,446	1.11	8,332,837
2009-10	7,193,306,859	1.11	8,192,444
2008-09	7,017,954,256	1.11	8,010,480
2007-08	6,702,926,718	1.11	7,651,598
2006-07	6,350,425,108	1.11	7,214,139
2005-06	5,923,499,903	1.10	6,662,399
2004-05	5,764,637,627	1.10	6,301,675
2003-04	5,428,270,113	1.08	5,800,851
2002-03	5,250,720,132	1.08	5,665,977
2001-02	5,045,825,276	1.07	5,417,410
2000-01	4,900,733,427	1.08	5,460,787
1999-00	4,501,236,224	1.05	4,798,956

DOUGLAS COUNTY'S PERMANENT TAX RATE
AUTHORITY BEGINNING FISCAL 1997-98 (RESULT OF
MEASURE #50) \$1.1124

PERCENT OF TOTAL TAXES IMPOSED IN DOUGLAS
COUNTY GOING TO DOUGLAS COUNTY 9.6%



Douglas County, Oregon
Timber Receipts/Safety Net Receipts
 2014-15 Budget

Year	TITLE I					TITLE III**			TITLE II***			TOTAL
	O & C Receipts	U. S. Forest Service Receipts				O & C Receipts	U. S. Forest Service Receipts	Total Title III	O & C Receipts	U. S. Forest Service Receipts	Total Title II	Title I, II & III
	General County	Public Works	County Schools	Total U.S. Forest Service	Total Title I							
FY 14-15	\$2,500,000	\$684,140	\$228,047	\$912,187	\$3,412,187			\$0			\$0	\$3,412,187

HISTORY of ACTUAL

FY 13-14*	\$9,527,620	\$5,913,815	\$1,971,271	\$7,885,086	\$17,412,706	\$784,627	\$649,360	\$1,433,987	\$896,717	\$742,126	\$1,638,843	\$20,485,536
FY 12-13*	9,071,440	5,957,058	1,985,686	7,942,744	17,014,184	747,060	654,108	1,401,168	853,783	747,552	1,601,335	20,016,687
FY 11-12	9,153,203	5,702,510	1,900,837	7,603,347	16,756,550	753,793	626,158	1,379,951	861,478	715,609	1,577,087	19,713,588
FY 10-11	18,044,888	10,546,146	3,515,382	14,061,528	32,106,416	1,486,049	1,158,008	2,644,057	1,698,343	1,323,438	3,021,781	37,772,254
FY 09-10	20,022,409	11,701,888	3,900,630	15,602,518	35,624,927	1,648,904	1,284,913	2,933,817	1,884,463	1,468,472	3,352,935	41,911,679
FY 08-09*	22,247,121	13,002,099	4,334,032	17,336,131	39,583,252	1,832,116	1,427,681	3,259,797	2,093,847	1,631,636	3,725,483	46,568,532
FY 07-08	24,668,294	14,417,126	4,805,709	19,222,835	43,891,129	1,523,630	1,424,751	2,948,381	2,829,598	1,967,514	4,797,112	51,636,622
FY 06-07	24,719,024	14,446,775	4,815,592	19,262,367	43,981,391	1,090,545	1,087,757	2,178,302	3,271,636	2,311,484	5,583,120	51,742,813
FY 05-06	24,474,281	14,303,738	4,767,913	19,071,651	43,545,932	1,079,748	1,076,987	2,156,735	3,239,243	2,288,598	5,527,841	51,230,508
FY 04-05	23,924,028	13,982,148	4,660,716	18,642,864	42,566,892	1,055,472	1,052,773	2,108,245	3,166,415	2,237,143	5,403,558	50,078,695
FY 03-04	23,617,007	13,802,713	4,600,904	18,403,617	42,020,624	1,041,927	1,039,263	2,081,190	3,125,780	2,208,434	5,334,214	49,436,028
FY 02-03	23,336,963	13,639,045	4,546,348	18,185,393	41,522,356	1,029,572	1,026,940	2,056,512	3,088,716	2,182,247	5,270,963	48,849,831
FY 01-02*	23,151,749	13,530,798	4,510,266	18,041,064	41,192,813	1,021,401	1,018,789	2,040,190	3,064,202	2,164,926	5,229,128	48,462,131
FY 00-01	15,517,128	9,429,027	3,143,009	12,572,036	28,089,164			0			0	28,089,164
FY 99-00	16,211,925	9,841,634	3,280,544	13,122,178	29,334,103			0			0	29,334,103
FY 98-99	16,906,721	10,270,151	3,423,384	13,693,535	30,600,256			0			0	30,600,256
FY 97-98	17,601,518	10,703,471	3,567,824	14,271,295	31,872,813			0			0	31,872,813
FY 96-97	18,296,315	11,130,658	3,710,219	14,840,877	33,137,192			0			0	33,137,192
FY 95-96	18,991,112	11,558,911	3,852,970	15,411,881	34,402,993			0			0	34,402,993
FY 94-95*	19,685,908	11,966,889	3,988,963	15,955,852	35,641,760			0			0	35,641,760
FY 93-94	19,685,908	11,961,548	3,987,183	15,948,731	35,634,639			0			0	35,634,639
FY 92-93	22,708,308	12,632,835	4,210,945	16,843,780	39,552,088			0			0	39,552,088
FY 91-92	24,199,030	14,184,947	4,728,316	18,913,263	43,112,293			0			0	43,112,293
FY 90-91	25,858,768	18,242,474	6,080,825	24,323,299	50,182,067			0			0	50,182,067
FY 89-90	27,532,729	17,122,261	5,707,420	22,829,681	50,362,410			0			0	50,362,410
FY 88-89	27,271,936	12,079,638	4,026,546	16,106,184	43,378,120			0			0	43,378,120

* The County received the first federal safety net funding in lieu of timber receipts beginning in FY95. In FY02 the funding was renewed through FY07 and then extended another year through FY08. In October, 2008, P.L. 110-343 passed and provides funding at a reduced level for FY09 through FY12. In July 2012, P.L. 112-141 passed and provides funding at 95% of the FY11 amount for FY13. The Helium Stewardship Act of 2013, passed October 2013 and provides a one year funding extension for FY14.

** Title III funds are safety net funds that come to the County to be spent only on projects that meet criteria specified in the safety net legislation.

*** Title II represents safety net funds left with the federal government to be expended on projects with objectives that will benefit federal lands.

Note: Coos Bay Wagon Road distribution under safety net legislation is not shown in this schedule.

Douglas County, Oregon
SB 916 Disclosure
FY 2014-15 Budget

PROGRAM	TOTAL EXPENDITURES	REVENUES					
		GENERAL RESOURCES	OTHER FUNDS	LOTTERY FUNDS	STATE FUNDS	DIRECT FED FUNDS	TOTAL
<u>ASSESSMENT & TAX</u>							
Adopted Budget 2014-15	2,909,737	2,242,237	37,500		630,000		2,909,737
Adopted Budget 2013-14	2,768,707	2,060,632	38,075		670,000		2,768,707
Actual 2012-13	2,771,490	2,106,401	43,765		621,324		2,771,490
Actual 2011-12	2,747,787	2,155,074	37,804		554,909		2,747,787
<u>DISTRICT ATTORNEY</u>							
Adopted Budget 2014-15	1,839,587	1,499,338	175,000		165,249		1,839,587
Adopted Budget 2013-14	1,695,532	1,445,331	100,000		150,201		1,695,532
Actual 2012-13	1,584,058	1,284,605	125,805		173,648		1,584,058
Actual 2011-12	1,569,628	1,241,479	131,319		196,830		1,569,628
<u>PUBLIC HEALTH</u>							
Adopted Budget 2014-15	4,226,607	889,431	665,263		2,576,513	95,400	4,226,607
Adopted Budget 2013-14	4,334,612	835,431	684,171		2,700,084	114,926	4,334,612
Actual 2012-13	4,170,390	745,040	774,727		2,542,898	107,725	4,170,390
Actual 2011-12	3,833,485	738,466	596,978		2,398,781	99,260	3,833,485
<u>JUVENILE</u>							
Adopted Budget 2014-15	3,129,082	1,477,901	410,545		1,205,636	35,000	3,129,082
Adopted Budget 2013-14	3,006,726	1,451,725	280,545		1,032,371	242,085	3,006,726
Actual 2012-13	2,721,950	1,068,670	384,110		1,107,446	161,724	2,721,950
Actual 2011-12	3,063,210	1,274,113	303,687		960,975	524,435	3,063,210
<u>MENTAL HEALTH</u>							
Adopted Budget 2014-15	2,464,000				2,464,000		2,464,000
Adopted Budget 2013-14	14,123,721	96,721	7,570,000		6,457,000		14,123,721
Actual 2012-13	9,501,460	70,182	6,618,655		2,812,623		9,501,460
Actual 2011-12	8,924,957	42,478	6,772,737		2,045,206	64,536	8,924,957
<u>VETERANS</u>							
Adopted Budget 2014-15	271,320	203,760			67,560		271,320
Adopted Budget 2013-14	258,223	130,256			127,967		258,223
Actual 2012-13	194,809	126,278			68,531		194,809
Actual 2011-12	212,317	149,016			63,301		212,317

Douglas County, Oregon
 SB 916 Disclosure
 FY 2014-15 Budget

PROGRAM	TOTAL EXPENDITURES	REVENUES					
		GENERAL RESOURCES	OTHER FUNDS	LOTTERY FUNDS	STATE FUNDS	DIRECT FED FUNDS	TOTAL
<u>ECONOMIC DEVELOPMENT</u>							
Adopted Budget 2014-15	6,716,231	275,877	5,396,704	340,000	703,650		6,716,231
Adopted Budget 2013-14	6,681,063	270,341	5,391,705	340,000	679,017		6,681,063
Actual 2012-13	5,319,080	263,859	4,522,421	355,545	177,255		5,319,080
Actual 2011-12	5,023,817	277,478	4,278,037	300,229	168,073		5,023,817
<u>ROAD</u>							
Adopted Budget 2014-15	23,526,258		608,300		22,317,958	600,000	23,526,258
Adopted Budget 2013-14	23,159,515		1,320,997		21,838,518		23,159,515
Actual 2012-13	17,932,081		916,928		17,002,553	12,600	17,932,081
Actual 2011-12	19,404,427		1,120,000		16,931,088	1,353,339	19,404,427

BEFORE THE BOARD OF COUNTY COMMISSIONERS OF DOUGLAS COUNTY, OREGON

IN THE MATTER OF ADJUSTING RESOURCES
AND EXPENDITURES IN THE 2014-15 APPROVED
BUDGET FOR GENERAL FUND AND HEALTH &
SOCIAL SERVICES FUND

}

ORDER

X

This matter coming on regularly before the Board of Commissioners on the 25th day of June 2014; and

THE BOARD FINDS:

That the 2014-15 Douglas County budget approved by the Budget Committee on May 13, 2014 set forth certain resources and appropriations for the General Fund and the Health & Social Services Fund; and that due to a change in estimates there is a need to adjust the resources and appropriations as well as a need to make adjustments in certain appropriations in the General Fund and the Health & Social Services Fund.

NOW THEREFORE, IT IS HEREBY RESOLVED:

That the Office of Management and Finance is hereby authorized and directed to:

General Fund

- Increase Intergovernmental revenues by \$75,000 and the District Attorney appropriation by \$100,000, decrease the Unappropriated Ending Fund Balance by \$25,000 and increase FTE by 1.0; and
- Increase Beginning Fund Balance by \$165,000, Intergovernmental revenues by \$1,012,783, and Charges and Other revenues by \$2,450, create appropriation for Transportation Services in the amount of \$1,197,703 and increase FTE by .90 FTE to move program to General Fund; and
- Decrease Transfers From Other Funds by \$5,362 and decrease Transfers To Other Funds by \$22,832; and

Health & Social Services Fund

- Decrease Beginning Fund Balance by \$165,000, Transfers From Other Funds by \$22,832, Intergovernmental revenues by \$1,012,783, Charges and Other revenues by \$1,200, Interest by \$1,250 and Transfers To Other Funds by \$5,362, eliminate the Transportation Services appropriation of \$1,197,703 and reduce FTE by .90 FTE to move program to General Fund.

Dated this 25th day of June 2014

DOUGLAS COUNTY OREGON
FILED

JUN 25 2014

BOARD OF COUNTY COMMISSIONERS
OF DOUGLAS COUNTY OREGON

Chair

Commissioner

PATRICIA K. HITT, COUNTY CLERK

Commissioner

BEFORE THE BOARD OF COUNTY COMMISSIONERS OF DOUGLAS COUNTY, OREGON

IN THE MATTER OF ADOPTING THE BUDGET AND MAKING APPROPRIATIONS FOR THE FISCAL YEAR 2014-15 AND LEVYING AND CATEGORIZING TAXES FOR THE YEAR BEGINNING JULY 1, 2014

ORDER

This matter coming before the Board of Commissioners of Douglas County following the Public Hearing on the Douglas County budget, held in Room 216, County Courthouse, Roseburg, Oregon on June 18, 2014 at 9:00 A.M.

IT IS HEREBY ORDERED that the Board of Commissioners of Douglas County adopts a budget for the fiscal year 2014-15 in the amount of

Appropriations	\$135,739,664
Unappropriated Ending Fund Balance	<u>94,435,630</u>
Total	<u>\$230,175,294</u>

IT IS HEREBY ORDERED that amounts for fiscal year beginning July 1, 2014 and for the purpose shown below, are appropriated as follows:

GENERAL FUND

Board of Commissioners	531,259
Building Department	853,799
Building Facilities	1,933,257
Commission on Children & Families	74,445
County Clerk	722,530
County Counsel	346,057
District Attorney	1,839,587
Financial Services	1,011,822
Human Resources	551,950
Information Technology	1,041,234
Justice of the Peace - Canyonville	259,993
Justice of the Peace - Drain	170,549
Justice of the Peace - Glendale	165,986
Justice of the Peace - Reedsport	178,454
Juvenile Services	3,129,082
Library	1,899,348
Museum	432,377
Nondepartmental	987,000
Parks	1,960,065
Planning	1,391,652
Solid Waste	3,056,030
Surveyor	427,411
Tax Assessment and Collection	2,456,171
Transportation Services	1,197,703
Operating Contingency	2,000,000
Transfers To Other Funds	4,696,357

TOTAL GENERAL FUND	\$33,314,118
---------------------------	---------------------

2014-0593
 Douglas County Official Records
 Patricia K. Hitt, County Clerk
 Commissioners' Journals
 06/25/2014

**DOUGLAS COUNTY OREGON
FILED**

JUN 25 2014

PATRICIA K. HITT, COUNTY CLERK

PUBLIC SAFETY FUND	Sheriff Enforcement	10,263,080
	Sheriff Corrections	6,293,913
	DINT	582,449
	Work Crew	1,450,083
	Communications 911 and Dispatch	1,959,480
	Radio System	546,804
	Transfers Out	18,000
	TOTAL PUBLIC SAFETY FUND	\$21,113,809
HEALTH & SOCIAL SERVICES	Mental Health and Developmental Disabilities Services	1,818,324
	Public Health	3,564,311
	Senior and Veterans Services	1,976,116
	Administrative and Department Services	3,198,849
	Transfers To Other Funds	274,044
	TOTAL HEALTH & SOCIAL SERVICES FUND	\$10,831,644
PUBLIC WORKS FUND	Administration	504,024
	Engineering	8,234,834
	Highway Operations and Maintenance	8,860,262
	Operating Contingency	300,000
	Transfers To Other Funds	5,627,138
	TOTAL PUBLIC WORKS FUND	\$23,526,258
COUNTY FAIR BOARD FUND	Personnel Services	889,193
	Materials and Services	1,106,383
	Capital Outlay	18,000
	TOTAL COUNTY FAIR	\$2,013,576
COUNTY FOREST MANAGEMENT	Personnel Services	437,240
	Materials and Services	269,800
	Capital Outlay	1,001,800
	Operating Contingency	10,000
	Transfers To Other Funds	37,500
	Additions to Notes Receivable	50,000
	Interfund Loans	2,361,529
	TOTAL COUNTY FOREST MANAGEMENT FUND	\$4,167,869
COUNTY SCHOOLS FUND	Materials and Services	550,047
	TOTAL COUNTY SCHOOLS FUND	\$550,047

DOG CONTROL FUND	Dog Control Operations	279,011
	Predatory Animal Control	136,454
	TOTAL DOG CONTROL FUND	\$415,465
DRUG ABUSE PREVENTION	Materials and Services	100,000
	TOTAL DRUG ABUSE PREVENTION FUND	\$100,000
INDUSTRIAL DEVELOPMENT	Materials and Services	223,000
	Debt Service	133,311
	Capital Outlay	900,000
	Additions To Notes Receivable	100,000
	TOTAL INDUSTRIAL DEVELOPMENT FUND	\$1,356,311
LAW LIBRARY FUND	Personnel Services	49,029
	Materials and Services	47,290
	TOTAL LAW LIBRARY FUND	\$96,319
SALMON HABITAT IMPROVEMENT	Materials and Services	150,050
	TOTAL SALMON HABITAT IMPROVEMENT FUND	\$150,050
TITLE III FUND	Materials and Services	8,126,209
	Capital Outlay	100,000
	Transfers To Other Funds	928,851
	TOTAL TITLE III FUND	\$9,155,060
WATER RESOURCE DEVELOPMENT	Galesville Operations	865,451
	Watermaster	78,228
	Operating Contingency	100,000
	Transfers To Other Funds	50,000
	TOTAL WATER RESOURCE DEVELOPMENT	\$1,093,679
CAPITAL PROJECTS FUND	Personnel Services	10,000
	Materials and Services	395,000
	Capital Outlay	3,595,000
	TOTAL CAPITAL PROJECTS FUND	\$4,000,000

SALMON HARBOR FUND

Personnel Services	710,522
Materials and Services	1,163,792
Capital Outlay	191,700
Interfund Loan Repayments	2,361,529

TOTAL SALMON HARBOR FUND	\$4,427,543
---------------------------------	--------------------

EMPLOYEE BENEFIT TRUST FUND

Personnel Services	50,441
Materials and Services	14,856,475

TOTAL EMPLOYEE BENEFIT TRUST FUND	\$14,906,916
--	---------------------

FLEET MANAGEMENT FUND

Personnel Services	912,815
Materials and Services	3,010,185
Capital Outlay	398,000
Operating Contingency	200,000

TOTAL FLEET MANAGEMENT FUND	\$4,521,000
------------------------------------	--------------------

The Board of Commissioners of Douglas County hereby levies and categorizes the taxes provided for in the adopted budget, in the aggregate amount of \$1.1124/\$1,000 and these taxes are hereby levied upon all taxable property within the county. The following allocation constitutes the above aggregate levy:

	General
	Government
	Limitation
PUBLIC SAFETY FUND	\$1.1124/\$1,000
TOTAL TAX LEVY	\$1.1124/\$1,000

DATED this 25th day of June, 2014.

BOARD OF COUNTY COMMISSIONERS OF DOUGLAS COUNTY, OREGON

Joseph L. Kautzman
 Commissioner

Debra L. ...
 Commissioner

Doug Robertson
 Commissioner